



Newsletter 1 | 2024

EPROPA: an update

EPROPA (European Program for ROutine testing of Patients with Advanced lung cancer) is a program addressed at **European patients with advanced non-small cell lung cancer (NSCLC)**. It represents an effective diagnostic and therapeutic opportunity that allows patients to have a broad and complete molecular characterization with the optimization of the management of the biopsy material and the time required for the outcome of the molecular analysis .



Index:

<i>EPROPA: an update</i>	1
<i>Welcome to the new Centre in Tirana (Albania)</i>	2
<i>The patient's Voice: Bruno</i>	2
<i>Figures in January 2024</i>	3
<i>More infos</i>	4

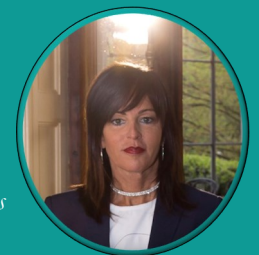
EPROPA Team



Welcome to a new European country (Albania)

“Another year has passed and the EPROPA program is still active and at the service of patients and oncologists who need it. We ended 2023 by announcing that a new European country (Albania) has been approved by its Ethics Committee and will therefore be part of this network together with Italy, Greece, Romania and Slovenia.

Many patients continue to contact WALCE, but the involvement of referral oncologists remains a key step in order to benefit from this programme. We are pleased to have been able to support the diagnostic and therapeutic approach of so many people living with this disease and their specialists.”



(Prof Silvia Novello - WALCE President, Director of S.C.D.U Medical Oncology and Head of S.S.D Pulmonary Oncology A.O.U San Luigi Gonzaga di Orbassano – TO – Italy)

WALCE

HQ based at Thoracic Oncology Unit (San Luigi Hospital)
Regione Gonzole, 10
10043 Orbassano (TO)
(Italy)

Ph. +39 011 9026980

info@womenagainstlungcancer.eu

www.womenagainstlungcancer.org



Welcome to the new Salus Centre in Tirana (Albania)

In Albania, patients have long faced a significant healthcare gap due to the absence of molecular testing within the country, especially for patients with lung cancer, the most common cancer in the country. This made necessary seeking such diagnostics abroad, a costly endeavor unaffordable for many.

The introduction of the EPROPA program marks a pivotal change.

Molecular testing is now accessible for free to many patients, opening the door to targeted therapies that were previously out of reach and this is a significant step towards adopting precision oncology for our patients.

Furthermore, EPROPA will also provide insights into the molecular characteristics of NSCLC among Albanian patients.

Additionally, EPROPA will shed light on the molecular profiles of NSCLC in the Albanian population, providing vital data to refine treatment approaches and align them more closely with patient needs, thus elevating the standard and effectiveness of care.



Dr Kleida Mati



The patient's Voice:

"The diagnosis came suddenly four years ago, completely unexpected during a normal check-up. At that time I had just turned 55, was apparently in excellent health and was going through a particularly good period of my life. I received the news: I had an advanced lung cancer with several hepatic metastases. I've considered the diagnosis as a death sentence, but at the same time I started a desperate search for a solution to fight and continue to hope. The study of the genetic profile of the tumour tissue carried out with EPROPA had identified a fairly rare mutation, which gave hope for a targeted therapy. My oncologist in Catania told me that there was a very promising drug available in clinical trial at the Thoracic Oncology Unit of St Luigi Hospital in Orbassano. My first travel from Sicily was like climbing a mountain, for the distance, for my psychological and physical condition, and for the idea that these travels had to take place very frequently. When I arrived at San Luigi I was welcomed with an affection that immediately warmed my heart, and I was offered invaluable support by WALCE association. I was assured the management of transfers, the most comfortable accommodation close to the hospital, and a complete availability to solve any problem that might arise. I believe that what EPROPA could offer to patients is priceless, because it concretely alleviates the anguish and suffering associated with the disease, and supporting WALCE means offering real help to people who fight for life every day."

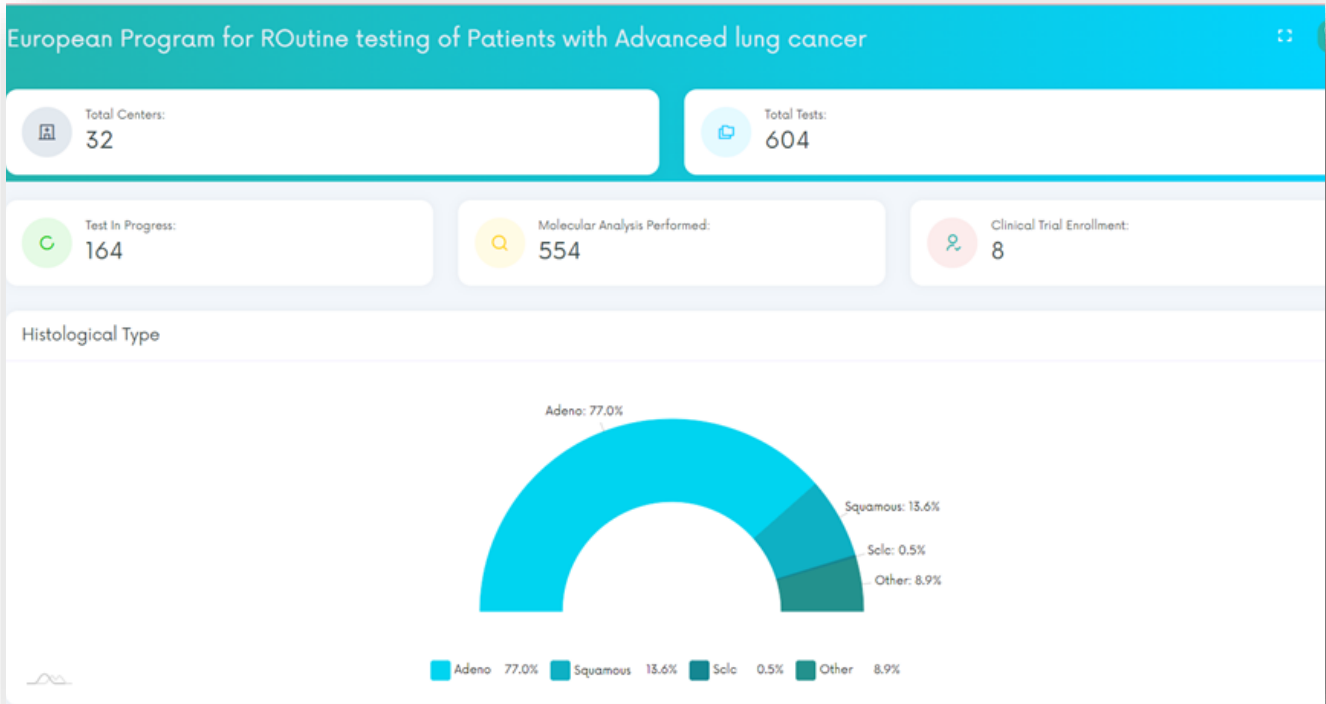
(Bruno, 59 years old - Catania)

Thanks to you for dedication and continued efforts,

in **January 2024** we reached these numbers:

Number of patients registered: 604

Number of centres registered: 32



Molecular Analysis performed: 554

Clinical trial recruitment by their cancer centre: 30

Clinical trial recruitment in other cancer centres: 8

We are able to identify SNVs, CNVs, gene fusions and indels in 161 genes linked to carcinogenesis by analysing DNA and RNA extracted from formalin-fixed, paraffin-embedded (FFPE) tumour tissue samples. We support patient enrolment in biomarker-guided clinical trials available in Europe.

EPROPA's first article is currently being published. Updates will be shared soon.



WALCE

HQ based at Thoracic Oncology Unit (San Luigi Hospital)
Regione Gonzole, 10
10043 Orbassano (TO) | Italy

Ph. +39 011 9026980
info@womenagainstlungcancer.eu
E | G | X



Fighting Lung Cancer Together.

www.womenagainstlungcancer.org

About WALCE

WALCE (Women Against Lung Cancer in Europe) is a non-profit Organisation based in Italy and networking at European level, founded in 2006 with the primary aim to increase women's awareness about the significant incidence and mortality of lung cancer in female population and to support patients affected by this disease (and their families).

WALCE currently provides accurate and updated information about lung cancer in terms of prevention, diagnosis and treatment, and it wants to promote communication strategies aim to aware public opinion and decision makers on damages of smoking. WALCE is mainly involved in: information and education dedicated to patients and their families, patient support programs and primary prevention.



More infos

How can you get any information?

Check the website: <https://www.epropa.eu/en/>

Here you can find information about:

- **participating procedures;**
- **tumour sample shipment instructions;**
- **molecular analysis and clinical trials.**

Biological Material: the samples for analysis must be preferably FFPE blocks of tumor tissue available (which will be returned at the end of the analysis) or 20 blank sections of the same and a paper copy of the report must be added. We provide to evaluate the material: in case of its inadequacy, the analysis will not be carried out. In case of its insufficiency, if possible, a further sending will be requested.

How can you enter in EPROPA platform?

- 1) Access to <https://www.epropa.eu/en>
- 2) Download the form and e-mail to: stefania.vallone@womenagainstlungcancer.eu
- 3) You will receive an email to finalize the process registering to the website platform: www.epropa.eu/portal

PROMOTED BY



ENDORSED BY



Thanks to companies that support EPROPA, considering the value and the potential of the project:

SUPPORTED BY UNRESTRICTED GRANTS OF

